



Figure 1. Carboneau House, looking southeast. The principal façade faces west onto Rockwell Avenue. December 2015. Photograph by Myron O. Stachiw.





Figure 2. Carboneau House looking northeast. Both of the one-story projecting bays on the south and west elevations are topped by hip roofs, while the house and rear elevation are topped by gable roofs. December 2015. Photograph by Myron O. Stachiw.



Figure 3. South elevation, existing conditions. Drawing by Ryan Hayward.

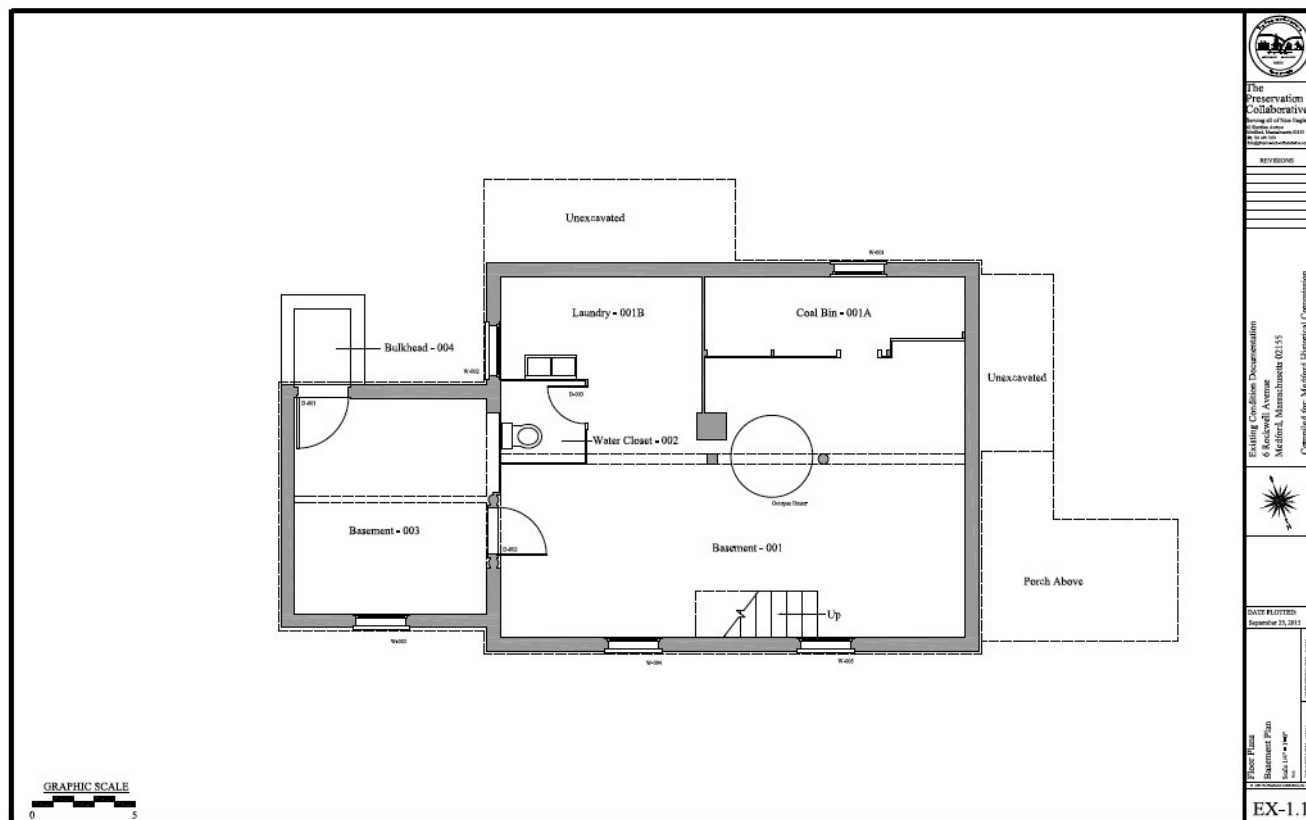


Figure 4. Cellar plan, existing conditions. Drawing by Ryan Hayward.



Figure 5. View of patched-in area of the ceiling (to the right of the seam) of Rm. 105 in the rear ell indicating the location of the original staircase to the cellar. At lower left of the image is the corner of the doorway into Rm. 106 in the southeast corner of the rear ell. Looking south. December 2015. Photograph by Myron O. Stachiw.

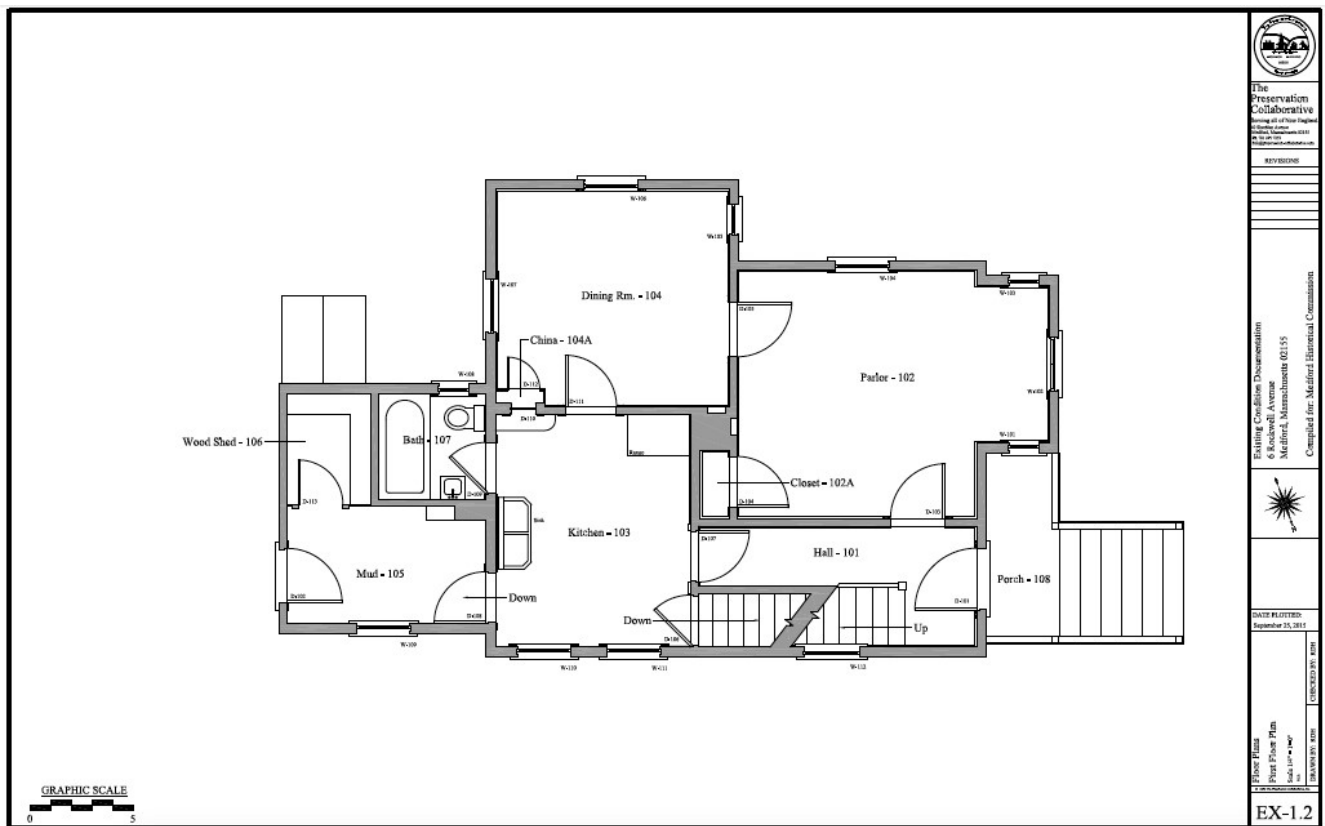


Figure 6. Ground floor plan, existing conditions. Drawing by Ryan Hayward.





Figure 7. Staircase to the second floor, looking east. December 2015. Photograph by Myron O. Stachiw.





Figure 8. Detail, exterior of the front door. December 2015. Photograph by Myron O. Stachiw.





Figure 9. Detail, cast bronze hinges with a floral pattern are found throughout the house on all of the doors. December 2015. Photograph by Myron O. Stachiw.





Figure 10. Detail, doorknob and bronze knob and lock escutcheon plates with geometric patterns are found on all of the doors in the house. December 2015. Photograph by Myron O. Stachiw.







Figure 11. Doorway from the parlor (Rm. 102) to the front entry stair hall (Rm. 101). All of the doorways in Rms. 101, 102, and 104 are trimmed with the same molded architraves with bull's eye corner blocks. December 2015. Photograph by Myron O. Stachiw.



Figure 12. Detail, window in the north wall above the staircase. December 2015. Photograph by Myron O. Stachiw.





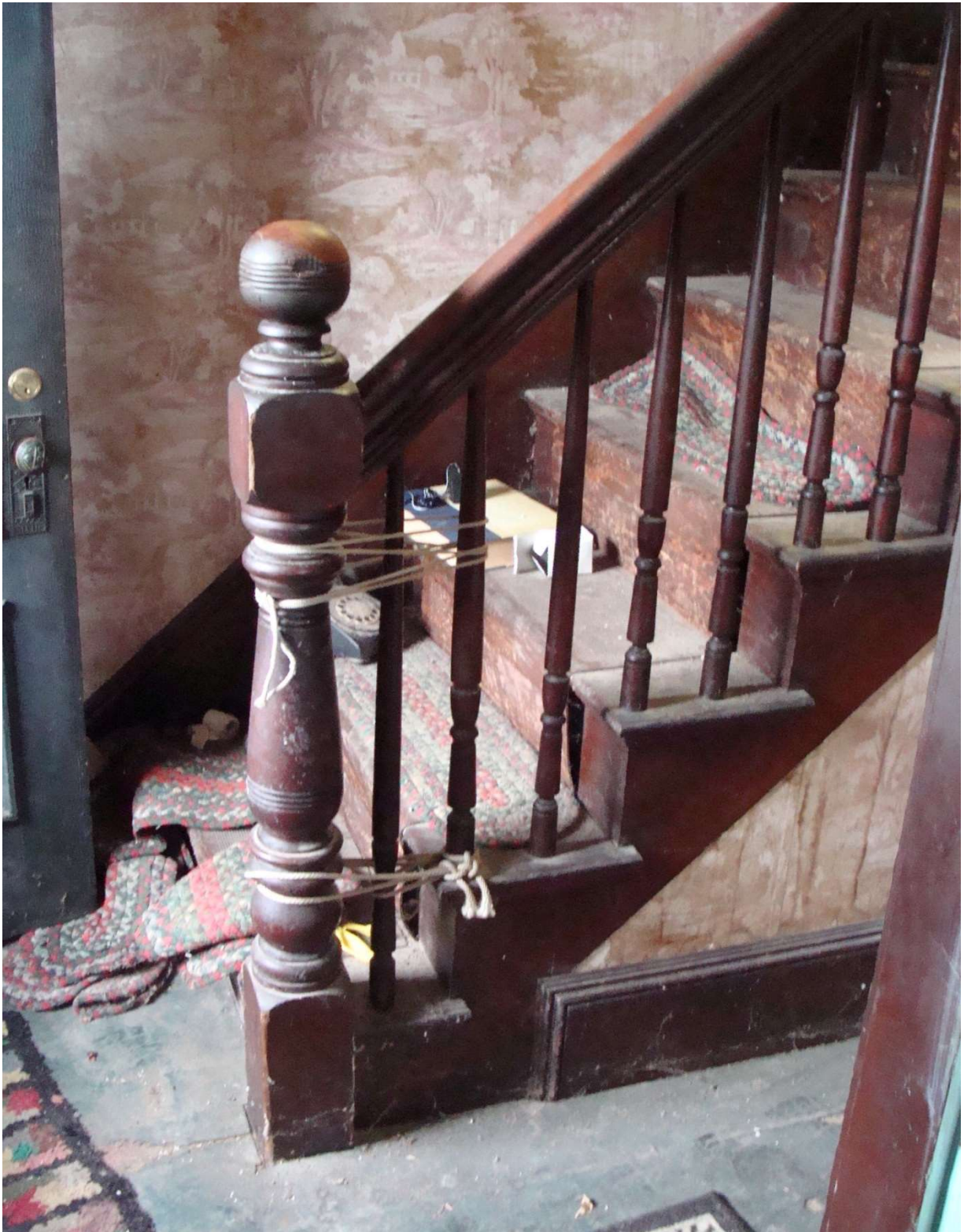


Figure 13. Detail, lower end of the staircase to the second floor. December 2015. Photograph by Myron O. Stachiw.



Figure 14. Detail, sash pulleys and plates for double-hung sash in the parlor (Rm. 102). December 2015. Photograph by Myron O. Stachiw.





Figure 15. Detail, Italianate ogee molding surrounding the door panels. December 2015.  
Photograph by Myron O. Stachiw.





Figure 16. Detail, niche in the east wall of the parlor for a stove thimble. December 2015.  
Photograph by Myron O. Stachiw.





Figure 17. View of the pass-through from the kitchen to the dining room, located in the south wall of the kitchen. Looking south. December 2015. Photograph by Myron O. Stachiw.



Figure 18. West wall of the kitchen (Rm. 103), looking west. The door to the left opens into the front entry stair hall; the door to the right opens into the present staircase to the cellar, originally a closet. December 2015. Photograph by Myron O. Stachiw.





Figure 19. Detail, window architrave, north wall of the kitchen. December 2015. Photograph by Myron O. Stachiw.

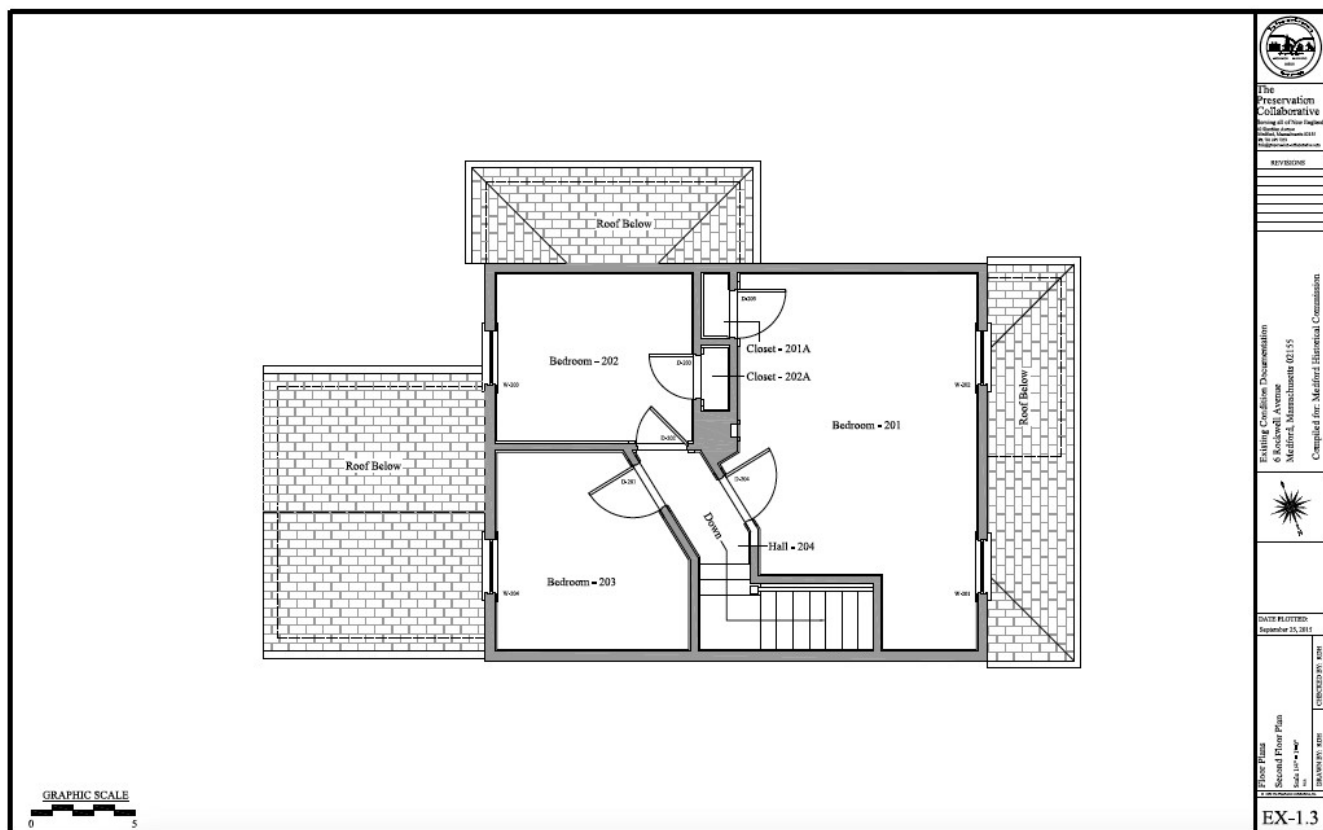


Figure 20. Plan of the second floor, existing conditions. Drawing by Ryan Hayward.